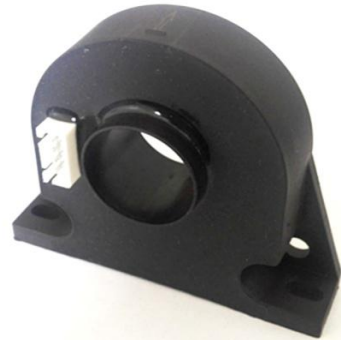


产品规格书	STMHALL	北京世特美测控技术有限公司	
SPECIFICATION		BEIJING STM MEASUREMENT & CONTROL TECHNOLOGY CO.,LTD	
产品名称 Model Name		产品型号 Model Type	
霍尔闭环电流传感器 Closed Loop Current Transducer Using Hall Effect		SE3T300C150V6	
		版本 Version	A.03



产品描述 Features

霍尔闭环电流传感器	Hall closed loop current transducer
用于测量直流、交流、脉冲电流等	For the electronic measurement of DC, AC and pulsed currents
原边穿孔式	The primary circuit: through hole mode
副边插座式	The secondary circuit: socket plug mode
原边副边之间绝缘	With a galvanic isolation between the primary circuit and the secondary circuit
双电源供电	Bipolar power supply
电流型输出信号	Output signal is current

特性 Advantages

出色的精度	Excellent accuracy
良好的线性度	Good linearity
低温度漂移	Low temperature drift
响应时间快	Optimized response time
频带范围宽	Wide frequency bandwidth
无插入损耗	No insertion losses
对外部干扰的高抗扰性	High immunity to external interference
高过载能力	Current overload capability

应用 Applications

交流变频调速,伺服电机牵引	AC variable speed drives and servo motor drives
直流电机驱动变换器	Static converters for DC motor drives
电池电源	Battery supplied applications
不间断电源	Uninterruptable Power Supplies(UPS)
开关电源	Switched Mode Power Supplies(SMPS)
焊机电源	Power supplies for welding applications

型号解释 Model type explanation

S	E3	T	300	C	150	V6	
							辅助电源代码 power supply code
							额定输出值:150mA rated secondary output current:150mA
							C:电流; V:电压 primary input,C:current; V:voltage
							额定输入值:300A rated primary input:300A
							A: AC; D:DC; T:交直流通用 primary input, A:AC; D:DC; T:AC,DC,and pulsed
							封装外壳代码 housing case code
S: 电量传感器 ; T:电量变送器							S: electrical transducer ;T: electrical transmitter with additional functions

电参数 Electrical data

IPN	原边额定电流	Primary nominal rms current	300	A		
IPM	电流测量范围	Primary current,measuring range	0...±500	A		
ISN	额定输出电流	Secondary nominal rms current	150	mA		
RM	测量电阻 Measuring resistance	with ±12V	@ ± 300Amax	R _M min	R _M max	Ω
			@ ± 500Amax	0	37	Ω
		with ±15V	@ ± 300Amax	10	43	Ω
			@ ± 500Amax	10	17	Ω
Vc	辅助电源电压	Supply voltage (± 5 %)	±12...±15	V		
Ic	辅助电源电流消耗	Current consumption @±15V	20+I _s	mA		
Vb	额定绝缘电压	Rated insulation voltage	reinforced insulation	300	V	
			basic insulation	600	V	
Vd	工频耐压	Rms voltage for AC insulation test @50Hz, 1min	3.5	kV		
Vw	耐冲击电压	Impulse withstand voltage 1.2/50µs	6.5	kV		
N	匝比	Turns ratio	1:2000			

精度-动态参数 Accuracy - Dynamic performance data

X	精度	Overall accuracy @ IPN, TA = 25°C	±0.5	%	
eL	线性误差	Linearity error	<0.1	%	
			Typ	Max	
Io	失调电流	Electrical offset current @ IP = 0, TA = 25°C		±0.2	mA
IOM	磁失调电流	Magnetic offset current @ IP = 0 and specified RM after an overload of 3 x IPN		±0.2	mA
IoT	失调电流温度漂移	Thermal drift of Io@ IP= 0,TA=-10°C...+70°C	±0.2	±0.64	mA
Tr	响应时间	Response time to 90 % of IPN step with a di/dt of 100A/µs	<1		µs
di/dt	di/dt跟随精度	di/dt accurately followed	>100		A/µs
BW	频带宽度	Frequency bandwidth (-3dB)	DC...100		kHz

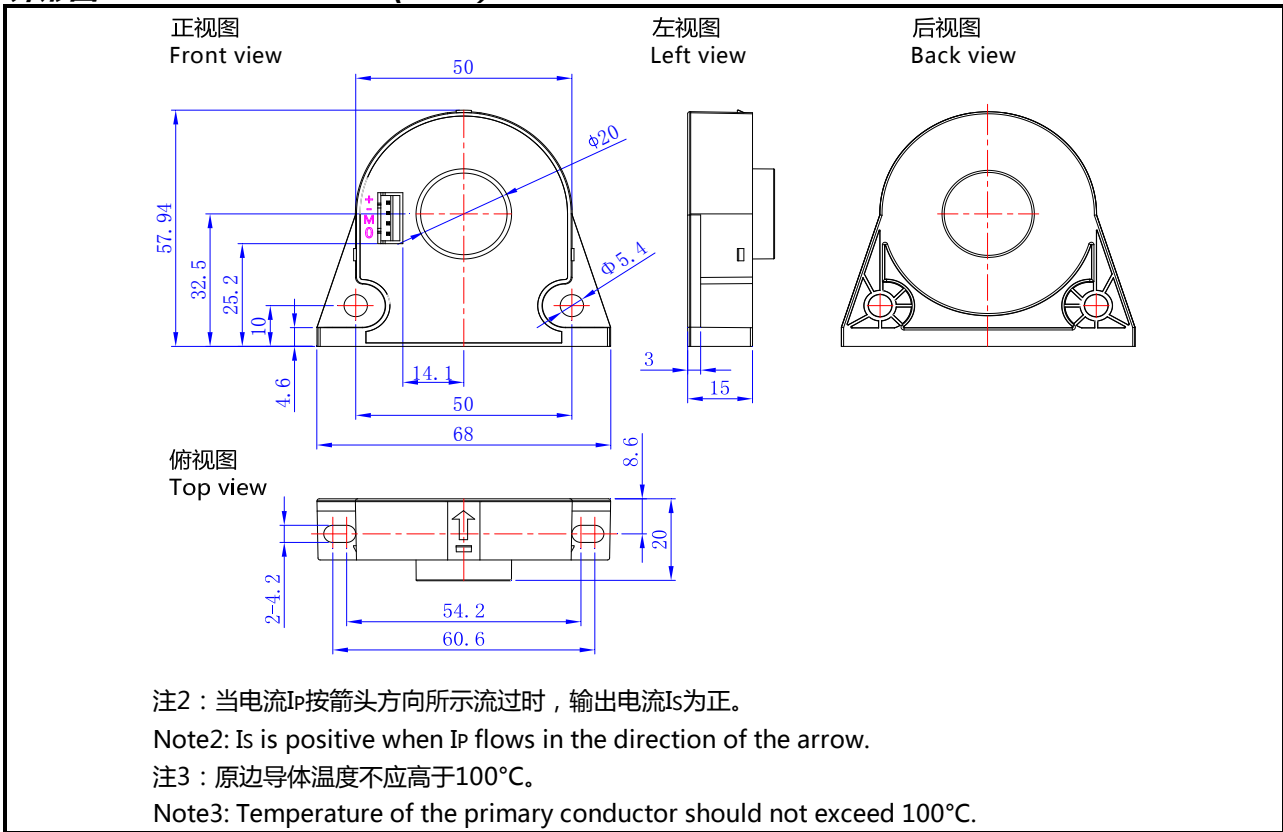
一般参数 General data

TA	工作环境温度	Ambient operating temperature	- 10 ... + 70	°C
TS	存储环境温度	Ambient storage temperature	- 45 ... + 90	°C
RS	副边线圈电阻	Resistance of secondary winding @TA = 70°C	21	Ω
m	重量	Mass	80	g
	安全标准	Standards Safety	EN50178 (1997)	
	外壳材质	Material of housing case ⁽¹⁾	PA66:A3X2G5 UL E36632	

注1: 在保证外壳材质的机械性能和电气性能符合说明书中要求的情况下, 我公司保留变更具体材料型号的权利。

Note1: The type of PA66 material may be changed on the premise that the electric and mechanical performance can cover the specification data.

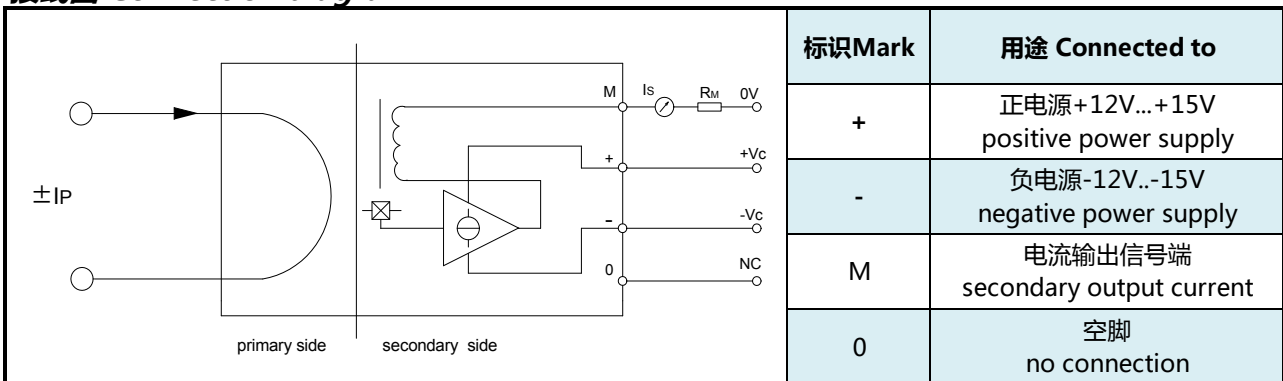
外形图 Mechanical outline (mm)



机械参数 Mechanical characteristics

未注公差	General tolerance	$\pm 0.5\text{mm}$	
传感器固定 Transducer fastening	水平方向 Horizontal	圆孔 Holes	$2 \times \Phi 5.4\text{mm}$
		无磁不锈钢螺钉 Steel screws	$2 \times \text{M5}$
		建议扭矩 Recommended fastening torque	$1.5\text{Nm} (\pm 10\%)$
	垂直方向 Vertical	长圆孔 Notches	$2 \times 4.2\text{mm}$
无磁不锈钢螺钉 Steel screws		$2 \times \text{M4}$	
	建议扭矩 Recommended fastening torque	$0.75\text{Nm} (\pm 10\%)$	
原边穿孔尺寸	Primary through-hole	$\Phi 20\text{mm}$	
副边连接	Connection of secondary	$2.54\text{mm} \times 4\text{pins}$	

接线图 Connection diagram



STMHALL	公司名称	北京世特美测控技术有限公司
	公司网址	www.bjstmck.com